

The Alternate Route





Tall like a tree

Short like grass



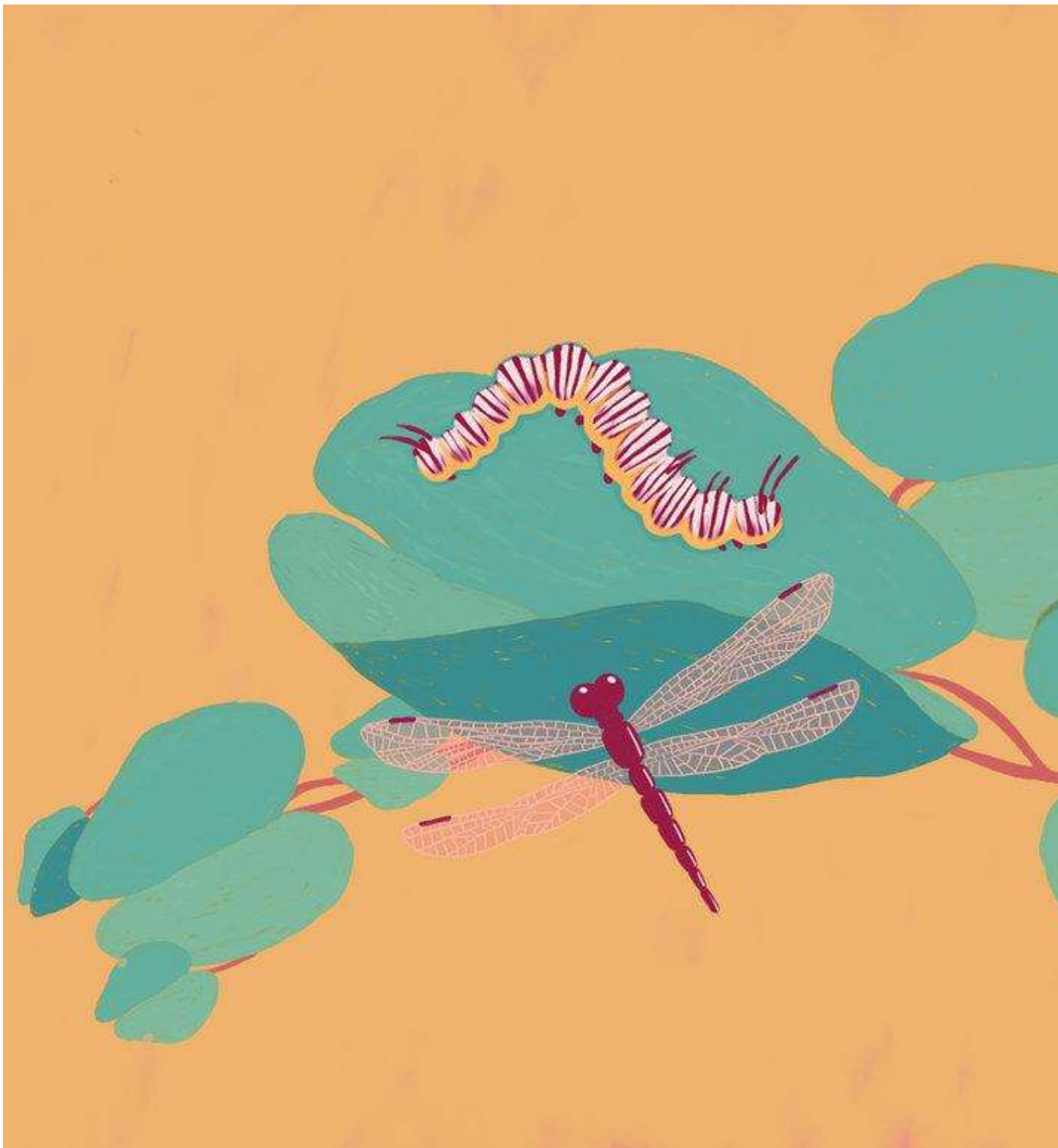
Up in the sky is a cloud

Down in the soil is an
earthworm



Light like a petal

Heavy like a rock



Over the leaf is a caterpillar

Under the leaf is a dragonfly



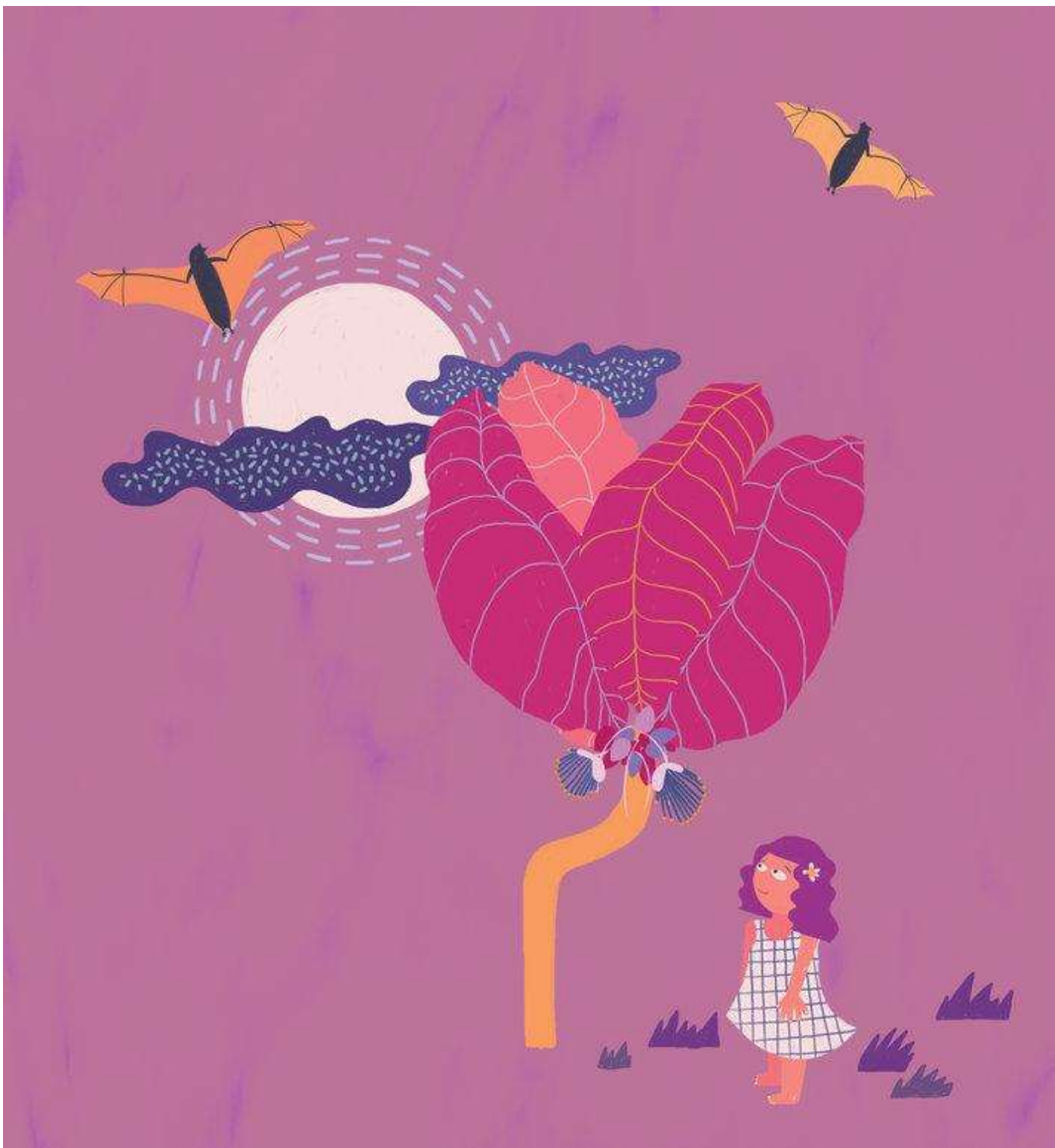
Quick as a squirrel

Slow as a snail



Birds **before** sunrise

Bats **after** sunset



Above the tree is
the moon

Below the tree is you!

